

FOR LEASE
±184,440 SF



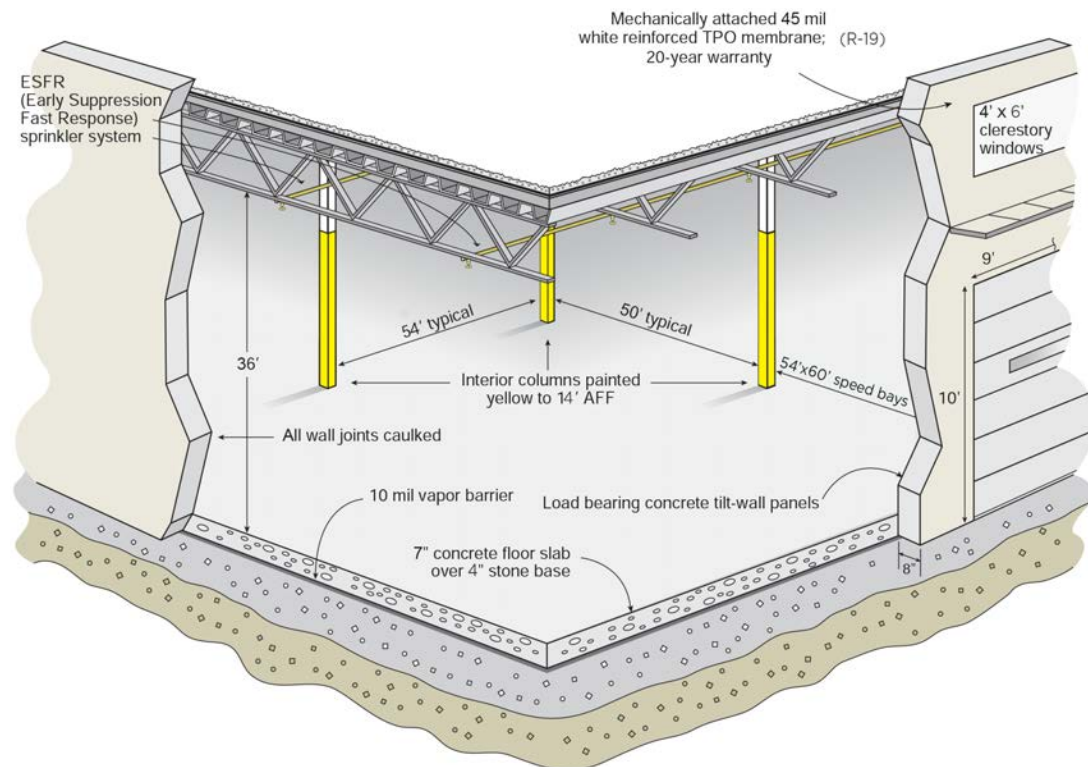
I-35 LOGISTICS PARK

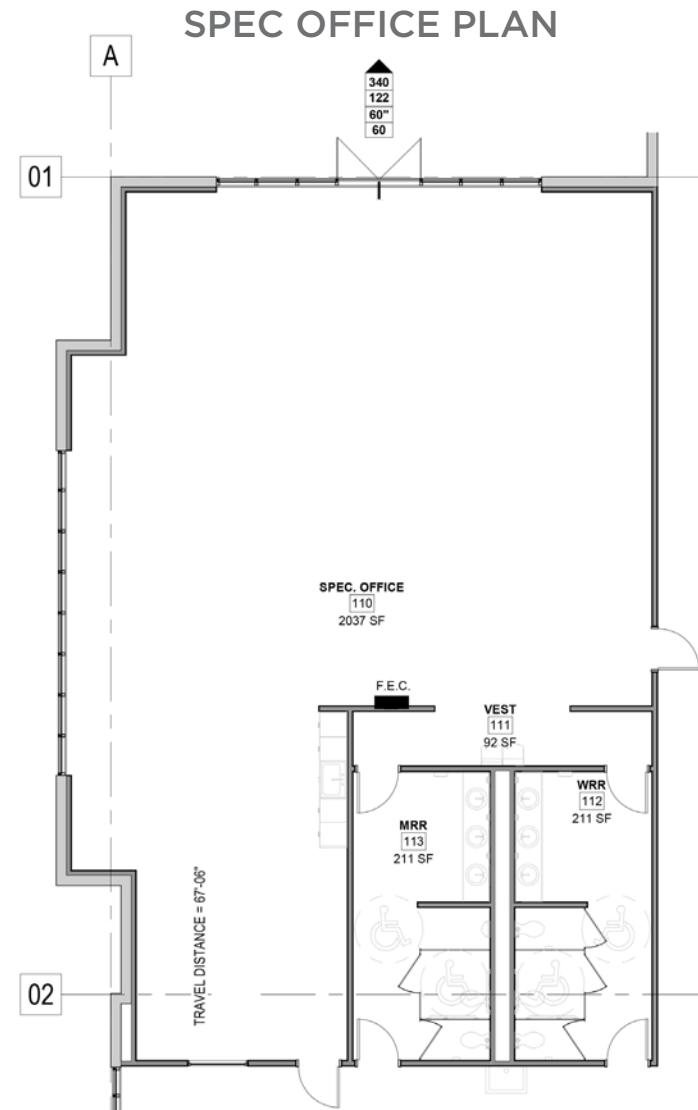
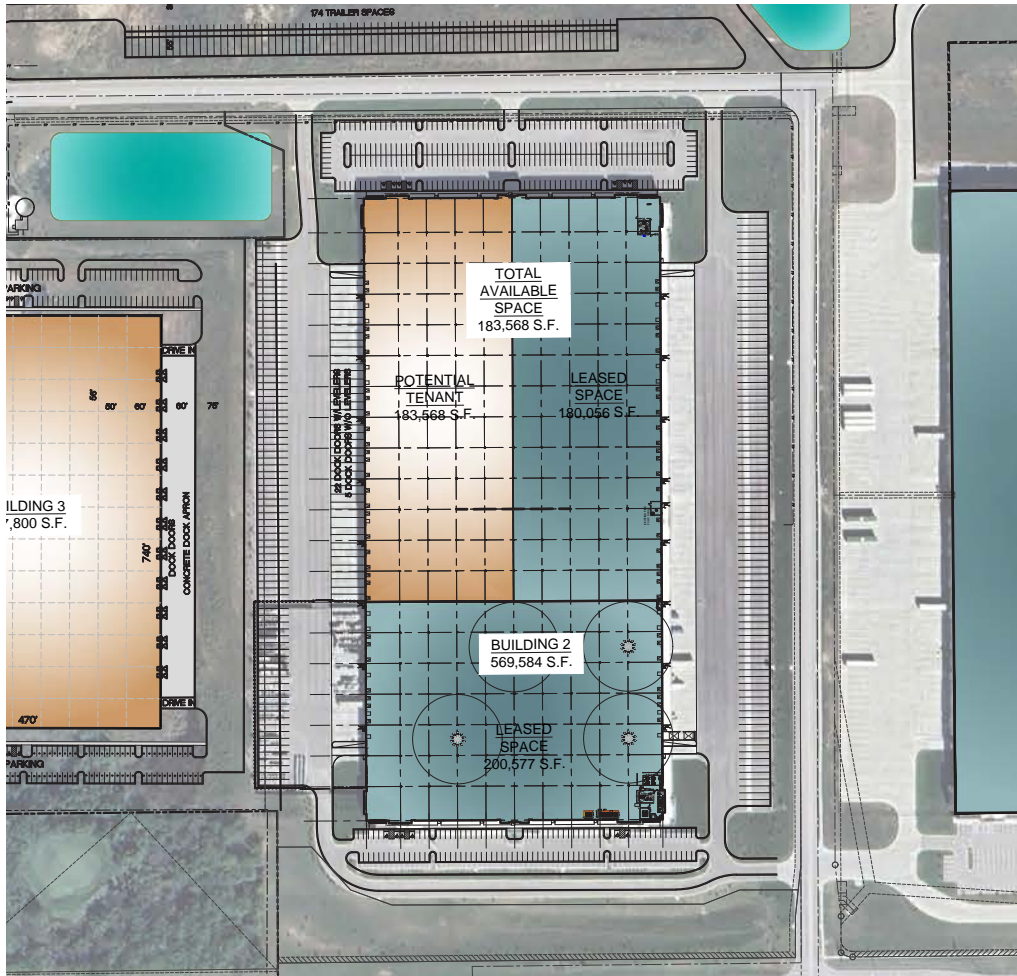
BUILDING II | 15800 S. GREEN ROAD, OLATHE, KS



PROPERTY HIGHLIGHTS

Building Size:	569,584 SF
Space Available:	184,440 SF
Office Area:	2,000 SF spec office
Site Area:	30 Acres
Clear Height:	36'
Loading:	26 (Fully Equipped, Expandable) 1 Drive-In Door
Auto Parking Spaces:	125
Trailer Parking Spaces:	55
Column Spacing:	54' x 50' typical with Speed bays 54' x 60'
Building Dimensions:	1,092' x 520'
Lighting:	LED Lights on Motion Sensors
Slab Thickness:	7' Unreinforced
Fire Protection:	ESFR Sprinkler
Power:	800 Amps, 480 Volt, 3 Phase, 4 Wire
Zoning:	M2
Taxes:	10 Years, 50% Abatement
Insurance:	\$0.15
CAM:	\$0.30

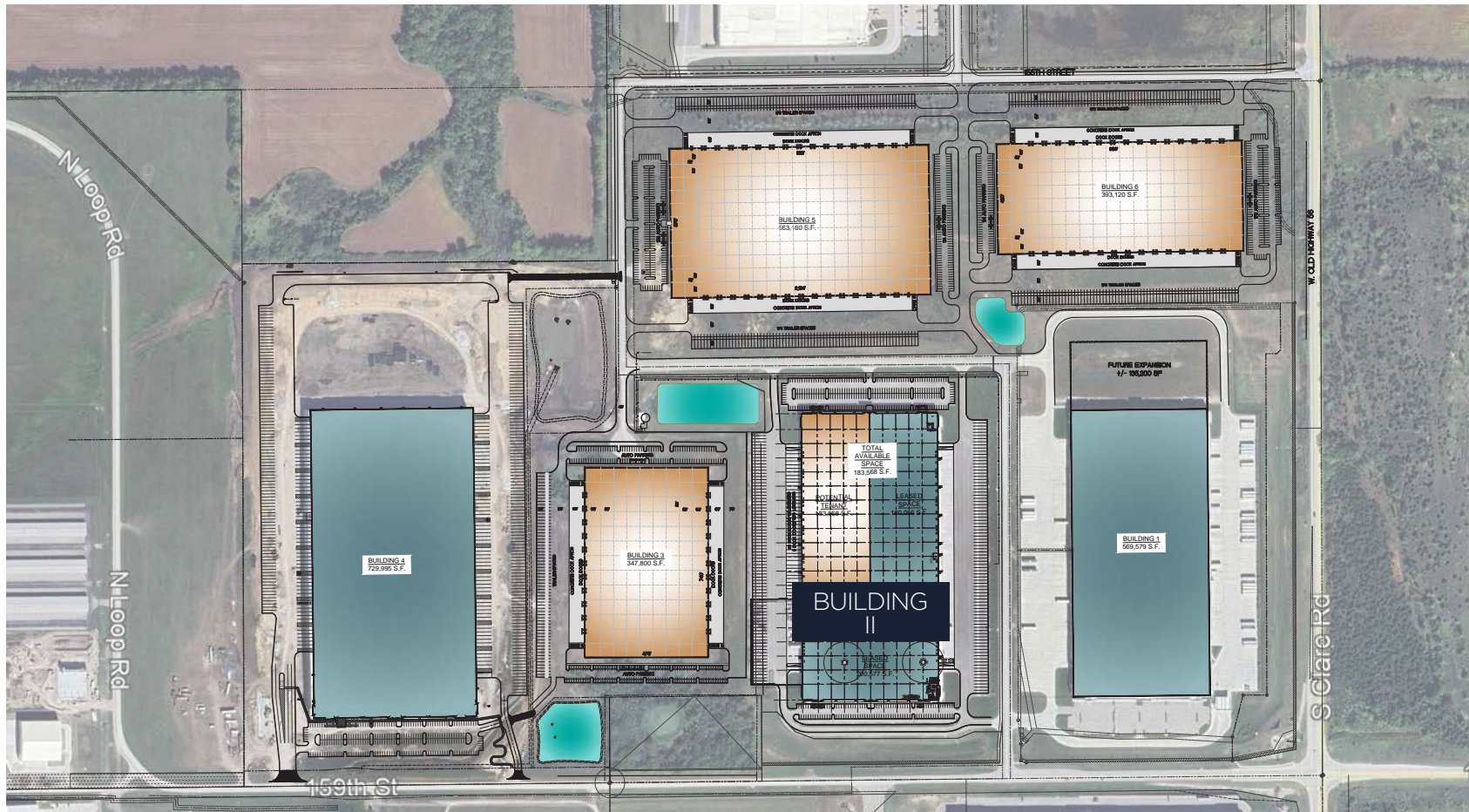




BUILDING PLAN

±184,440 SF

LOCATION AERIAL



CONTACT INFORMATION: **JOSEPH S. ACCURSO**

Vice Chair
+1 816 412 0216
joe.accurso@cushwake.com

ROB M. HOLLAND, CCIM

Managing Director
+1 816 412 0214
rob.holland@cushwake.com

